

# BURGH ISLAND

## HOTEL

### ===== GUEST FACTSHEET =====

#### Tides

The tide “meets” and “parts” at approximate 6 hourly intervals, which change each day and may differ with tide height and weather conditions. Everything on the island is brought over the beach - including you.

We hope that you enjoy the romantic sight of the tides moving across the beach. However, please bear in mind that weather and wind can change quickly and your safety is always paramount in our decisions as to access over the beach.

#### Rooms

Rooms are ready for guests from 3:30pm and check out time is 11.30am. You are welcome to arrive and depart at any convenient time, subject to tides and access. At busy times we may need to ask you to move your car from the our secure parking area to the public car park before/after check in/out time.

**If there is anything further we can do for you during your stay, or additional information you may need, please contact us at any time.**

**In particular, you can book: beauty treatments, beautiful bouquets, picnic hampers, sauna and tennis court through reception at any time before your stay.**

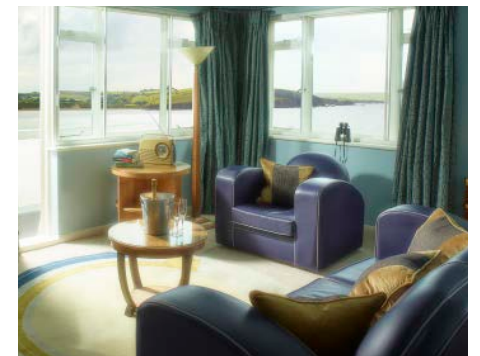
\* Please advise us of any dietary requirements.



#### Dress Code

Most of our guests like to dress formally for dinner. Black tie and evening dress are quite usual. This is in keeping with the period atmosphere of evenings at Burgh, where it is quite simply impossible to be overdressed!

If, however, you prefer a less formal experience, please let us know and we'll reserve a table for you in our Captain's Cabin or Ganges Restaurant. Many guests will choose to do this on their first evening, after the journey down. There is also the option (on advance notice) of joining the popular curry night in The Pilchard Inn on Fridays.



#### Location

Postcode: **TQ7 4BG** | GPS: **N50 17.07' W03 54.13'**

Two miles out of Bigbury-on-Sea, you will pass through “St Ann's Chapel” please call us from here on **01548 810 514**. Mobile phone reception is limited in the final approach to Burgh Island.

We will give you instructions on access to our mainland garages, in Bigbury on Sea, which are gated with a frequently changing code. We will then transport you and your luggage over the beach to the island.

If you are arriving by taxi, please remember also to call to let us know you are on the way. Your driver should be asked to set down at The Beach Shop in the public car park.

On the island we have limited mobile phone reception. Wifi access is available in the hotel at no charge.

The Hotel, The Pilchard Inn and our bedrooms are all no smoking areas.