

BURGH ISLAND

HOTEL

BURGH ISLAND HOTEL TARIFF 1ST APRIL 2017 - 31ST MARCH 2018

TARIFF IS PER NIGHT PER ROOM, INCLUSIVE OF DINNER, BREAKFAST AND VAT



BEACH HOUSE

Apartment on Beach: double bed with spectacular sea views and sun decks.

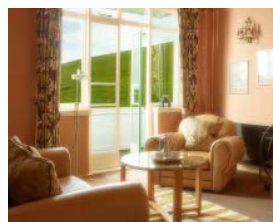
Bed: King Size 5.6ft **£680**



GARDEN

Huge suite with Easterly sea views: two bathrooms, CD player with private garden

Bed: Super King 6.0ft **£680**



NETTLEFOLD

Large suite: southerly sea views and balcony.

Bed: Queen 5.0ft **£590**



AVON

Large suite: double aspect north & easterly sea views & balcony shared sun deck.

Bed: Double 4.9ft **£590**



EDDYSTONE

Large suite: southerly sea views and balcony.

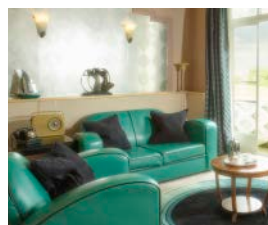
Bed: Double 4.9ft **£590**



NOEL COWARD

Large suite: double aspect north and easterly sea views, balcony.

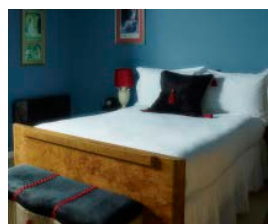
Bed: Super King 5.9ft **£590**



MALCOLM CAMPBELL

Medium suite: small balcony, bath open to bedroom with westerly sea views.

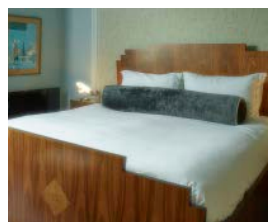
Bed: Queen 5.0ft **£555**



JOSEPHINE BAKER

Medium suite: southerly sea views over the Mermaid Pool shared use of sun deck.

Bed: Queen 5.0ft **£555**



MERMAID

Medium suite: southerly sea views over the Mermaid Pool.

Bed: King Size 5.6ft **£555**



AMY JOHNSON

Medium suite: bath open to bedroom, westerly sea views.

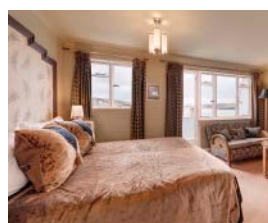
Bed: Double 4.9ft **£555**



CUNARD

Double room: unique curved large balcony, huge bathroom, easterly sea views.

Bed: Queen 5.0ft **£480**



MOUNTBATTEN

Double room: balcony, easterly sea views across the tidal beach.

Bed: Queen 5.0ft **£480**

BURGH ISLAND HOTEL TARIFF 1ST APRIL 2017 - 31ST MARCH 2018

TARIFF IS PER NIGHT PER ROOM, INCLUSIVE OF DINNER, BREAKFAST AND VAT



THE ARTIST'S STUDIO

Romantic room above the Pilchard Inn. Bath in middle of room. West and easterly sea views.

Bed: Queen 5.0ft **£440**



FORMBY

Smaller suite: southerly sea views.

Bed: King Size 5.6ft **£490**



W O BENTLEY

Double room: balcony, westerly sea views.

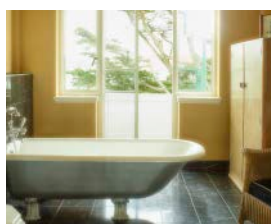
Bed: King Size 5.6ft **£480**



R J MITCHELL

Twin bedded room: can also be made as double, balcony, westerly sea views.

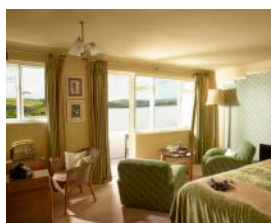
Bed: King Size 5.6ft **£480**



ODEON

Double room: balcony, westerly sea views, vast bathroom, smaller bedroom.

Bed: Double 4.9ft **£480**



CHIRGWIN

Twin bedded room: can also be made as double, balcony, with easterly sea views.

Bed: King Size 5.6ft **£480**



"FRUITY" METCALFE

Large suite: double aspect north and easterly sea views, balcony.

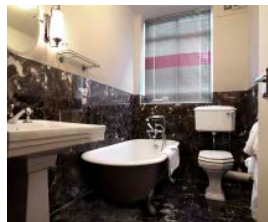
Bed: King Size 5.6ft **£480**



CHRISTIE

Double room: balcony, westerly sea views, vast bathroom, smaller bedroom.

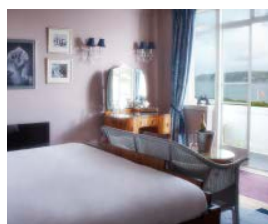
Bed: King Size 5.6ft **£480**



JESSIE MATTHEWS

Twin bedded room, can also be made as double, balcony with westerly sea views.

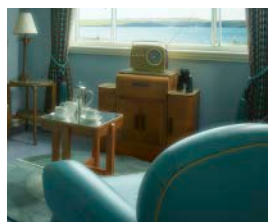
Bed: King Size 5.6ft **£480**



GERTIE LAWRENCE

Double room: balcony and westerly sea views towards Eddystone lighthouse.

Bed: King Size 5.6ft **£480**



HOPE

Smaller suite: southerly sea views.

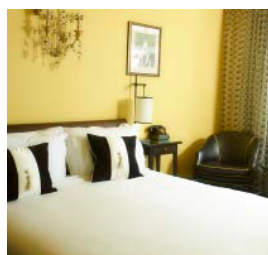
Bed: King Size 5.6ft **£490**



SHRIMP

Single occupancy/Double occupancy with South-facing sea views. Double room: bath open to the bedroom

Bed: Double 4.9ft **£310/£420**



MISS DOROTHY BUTTON

Single occupancy/Double occupancy with South-facing sea views. Double room with A walk in shower; heated marble floor and an Oriental feel.

Bed: Queen 5.0ft **£310/£420**

All rooms are different in decoration but similar in quality and style. All have wifi access but strictly no TVs (there is a TV in our library room and period DVDs can be borrowed from Reception). In each room you will also find: Burgh Island bespoke toiletries, chocolates and water; fresh tea or coffee is brought to your room each morning at your preferred time.

© Burgh Island Hotel Ltd 2017. All rights reserved.